

Maunamé

JUPE CHARLIE

Le tableau des tailles est à retrouver dans le livret explicatif.

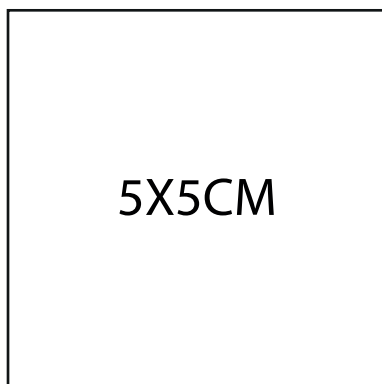
Marges de couture : 1 cm incluses.

Ourlet : 3 cm.

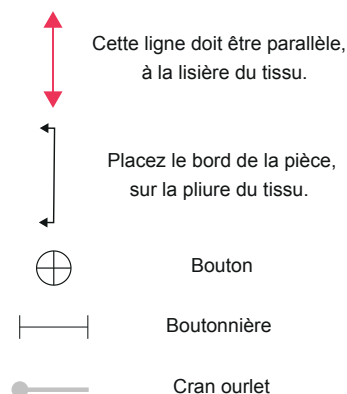
LES TAILLES

34	-----
36	-----
38	-----
40	-----
42	-----
44	-----
46	-----

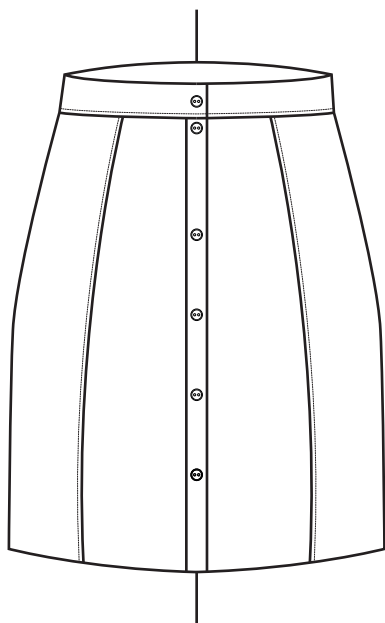
CARRÉ TEST



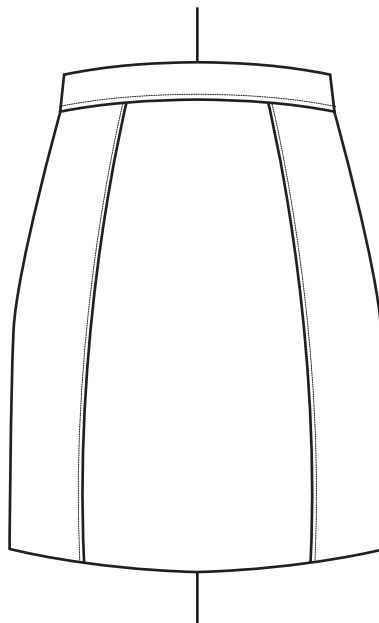
SYMBOLES

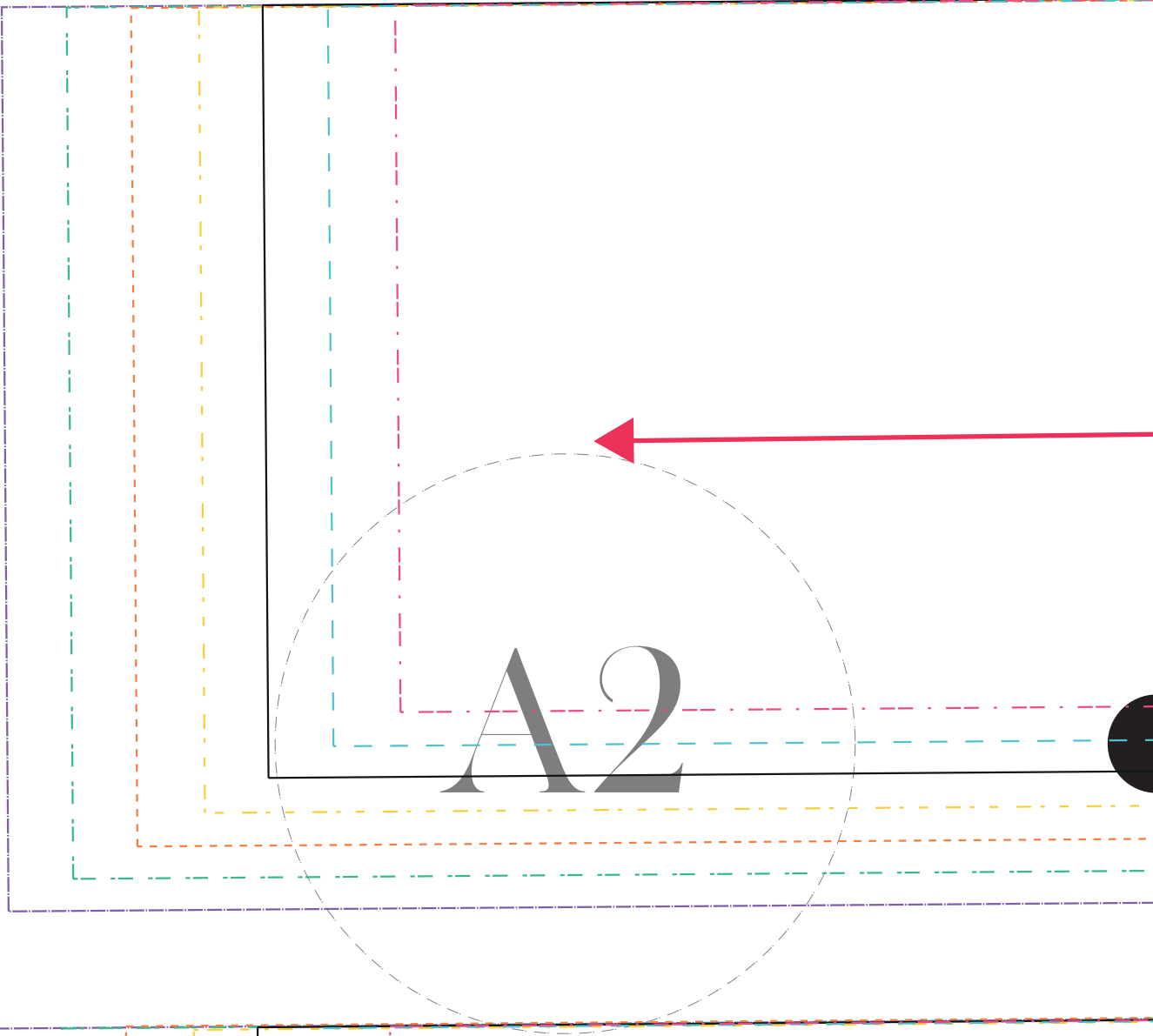


DEVANT



DOS





A2

COUPER AU PLI

DROIT-FIL

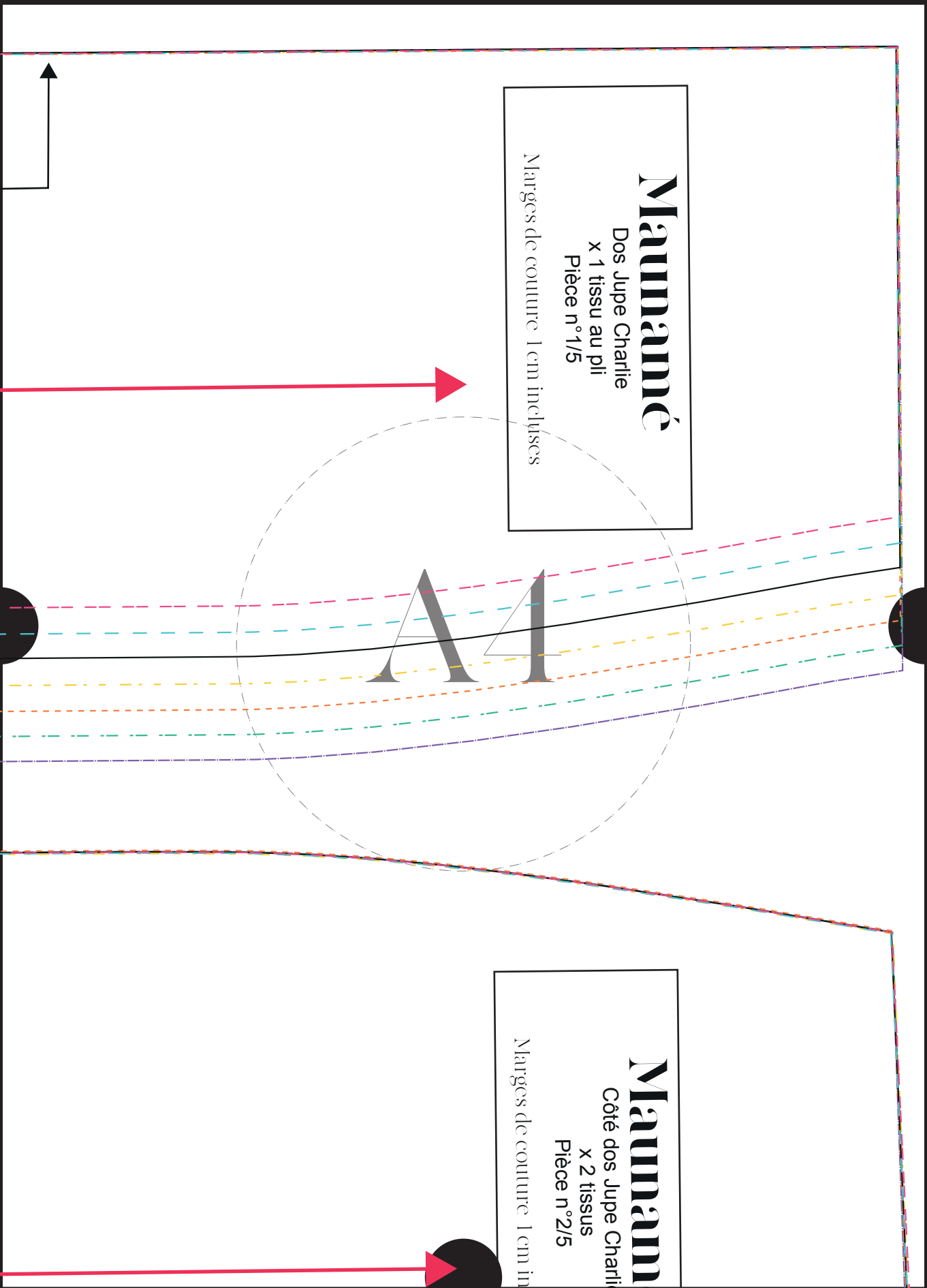
A3



Mammamé

Dos Jupe Charlie
x 1 tissu au pli
Pièce n°1/5

Marges de couture 1 cm incluses



AI

Mammam

Côté dos Jupe Charlie
x 2 tissus
Pièce n°2/5

Marges de couture 1 cm in

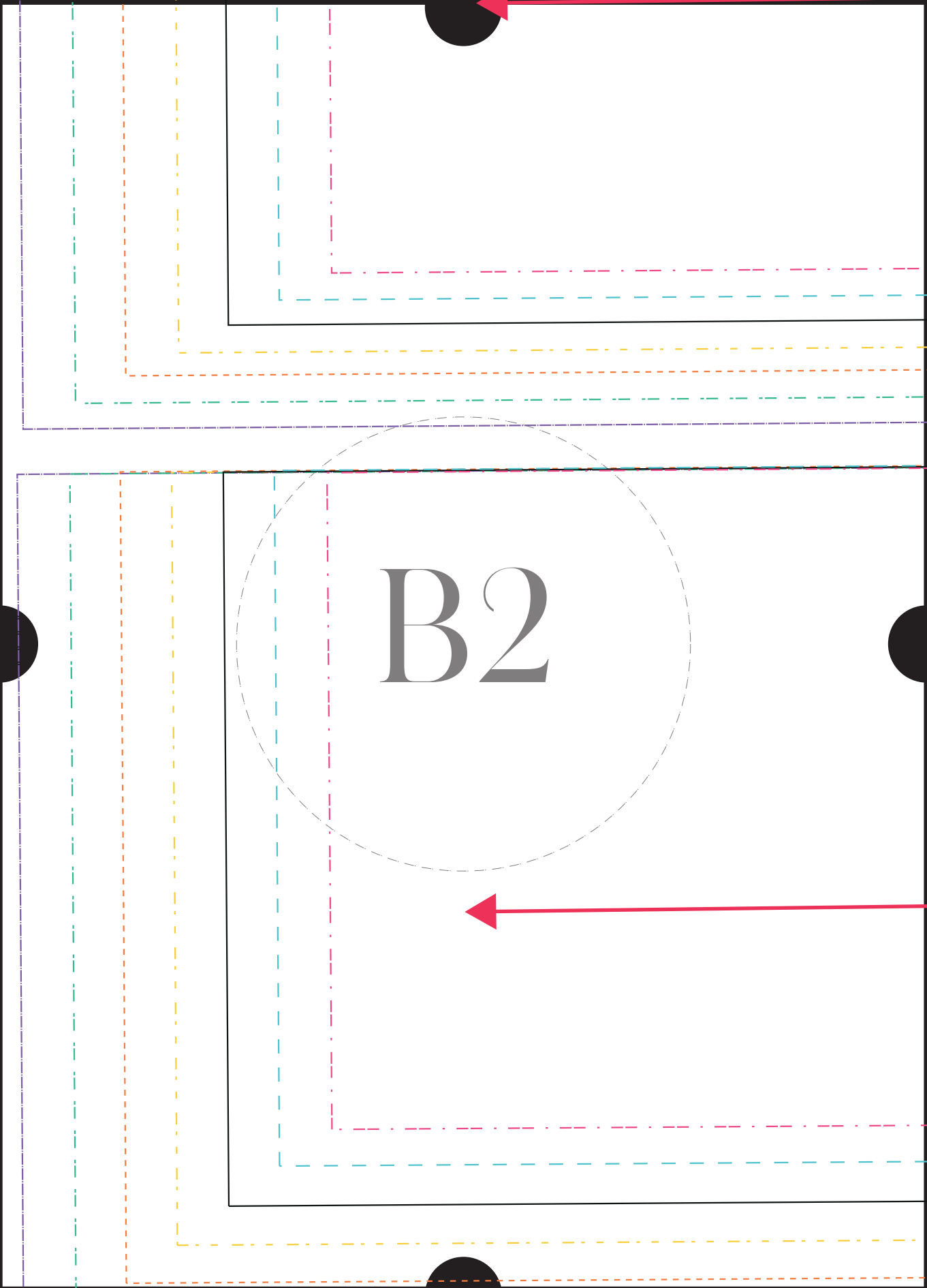
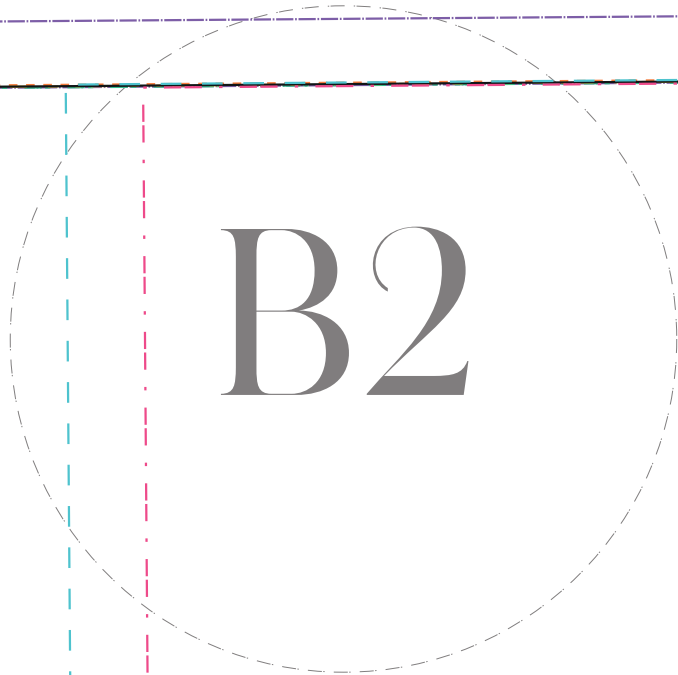
COUPEZ AU PLI

Mammamé
Côté devant Jupe Charlie
x 1 tissu au pli + thermo
Pièce n°5/5

Marges de couture 1cm incluses

B

B2



DROIT-FIL

B3

DROIT-FIL

pluses

Mammamé

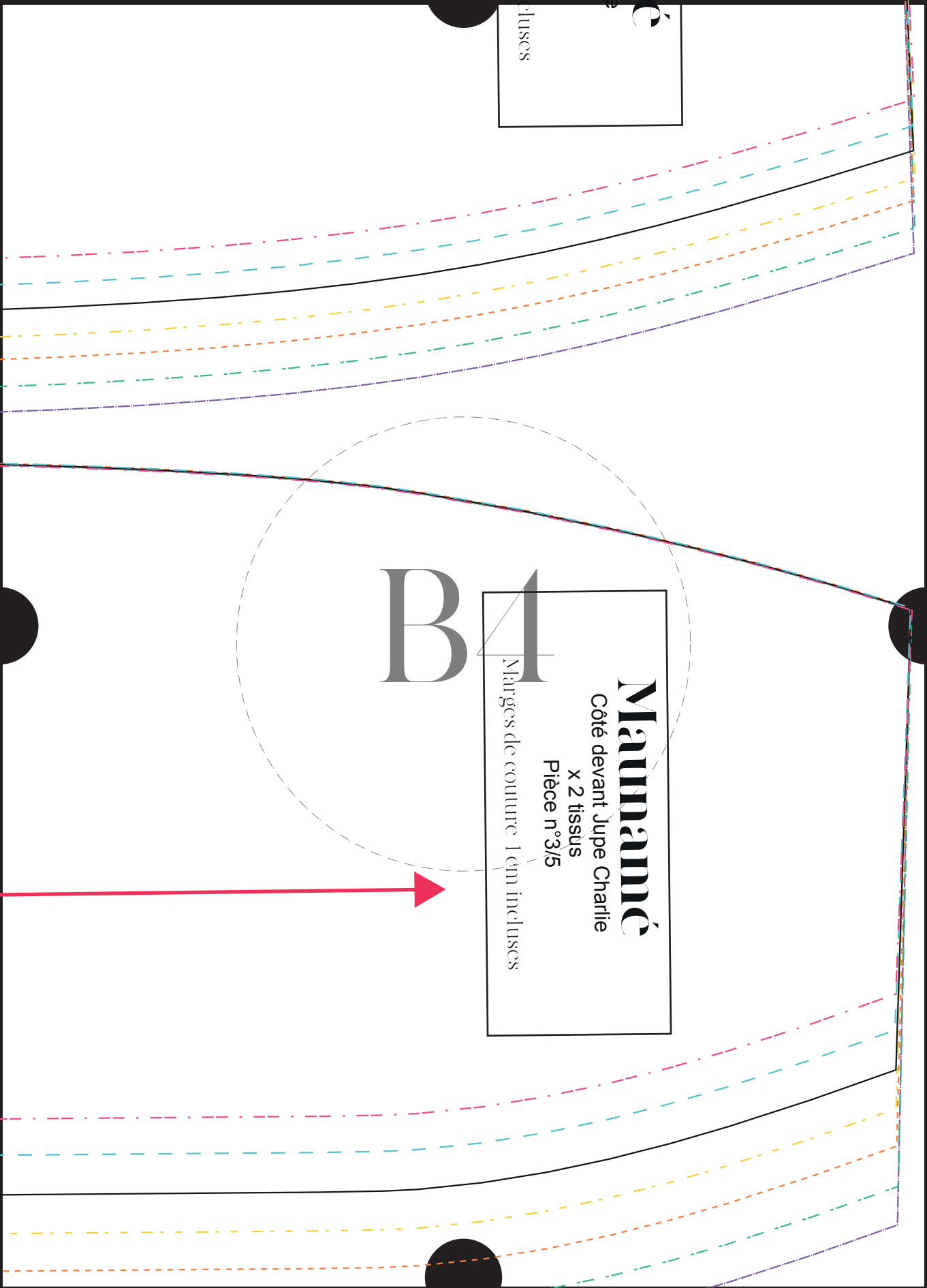
Côté devant Jupe Charlie

x 2 tissus

Pièce n°3/5

Marges de couture 1 cm incluses

B1



DROIT-FIL

A handwriting practice sheet for the letter 'C' and the number '1'. The sheet is enclosed in a dashed purple border. A vertical dashed green line runs down the center, labeled 'DROIT-FIL' (straight line) at the top with a red double-headed arrow. A large dashed grey circle is centered on the page. Inside this circle, the letters 'C' and '1' are shown in a grey font. To the right of the letters are six small circles, each with a different colored dashed outline: pink, cyan, black, yellow, orange, and green. Horizontal dashed lines in corresponding colors (pink, cyan, black, yellow, orange, green) extend from the center of each small circle across the page. A solid black horizontal line is drawn below the 'C' and '1'.

C2



C3

DROIT-FIL



Mamanmè

Devant Jupe Charlie

x 2 tissus

Pièce n° 4/5

Marges de couture 1cm incluses

